



Galton Road

Sunningdale



Downstairs there is a double reception room with feature wood-burner, refurbished kitchen with underfloor heating, central island and dining space with bi-folding doors out to the garden, family room that could also be used as a study, and a downstairs WC.

Upstairs there are three bedrooms and a recently refitted bathroom with underfloor heating.

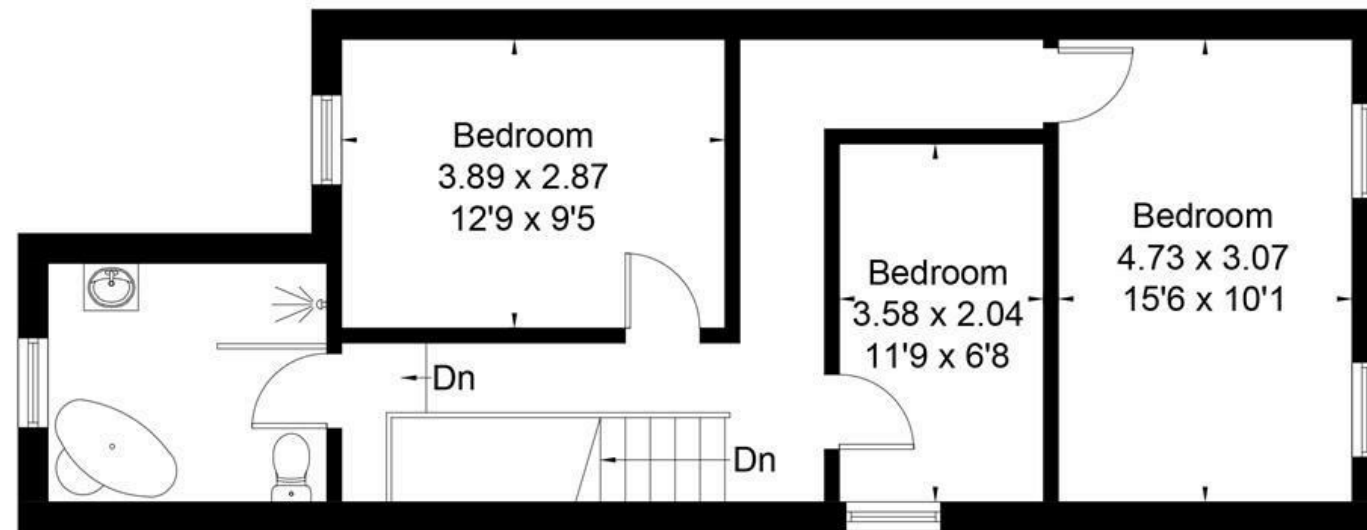
The rear garden has patio, decked and lawned areas plus side access.

Galton Road is in Sunningdale close to Charters School, Holy Trinity Primary School and The Marist. The closest station is Sunningdale where trains run to London Waterloo and Reading. Nearby points of interest include Ascot Racecourse, Coworth Park, Legoland, Sunningdale Golf Club, Virginia Water Lake, Wentworth Club and Windsor Great Park. Sunningdale is also convenient for the M3, M4, M25 and Heathrow Airport.

EPC rating E.



Approximate Area = 126.9 sq m / 1366 sq ft



First Floor



Ground Floor

VIDEO VIEWING AVAILABLE - An extended and refurbished three bedroom semi-detached house close to Sunningdale train station.



01344 627777

osborneheath.co.uk • ascotsales@osborneheath.co.uk • ascotlettings@osborneheath.co.uk